

# Stony Brook Estates

Section 4

Troy, Ohio

Updated: 08/07/2024

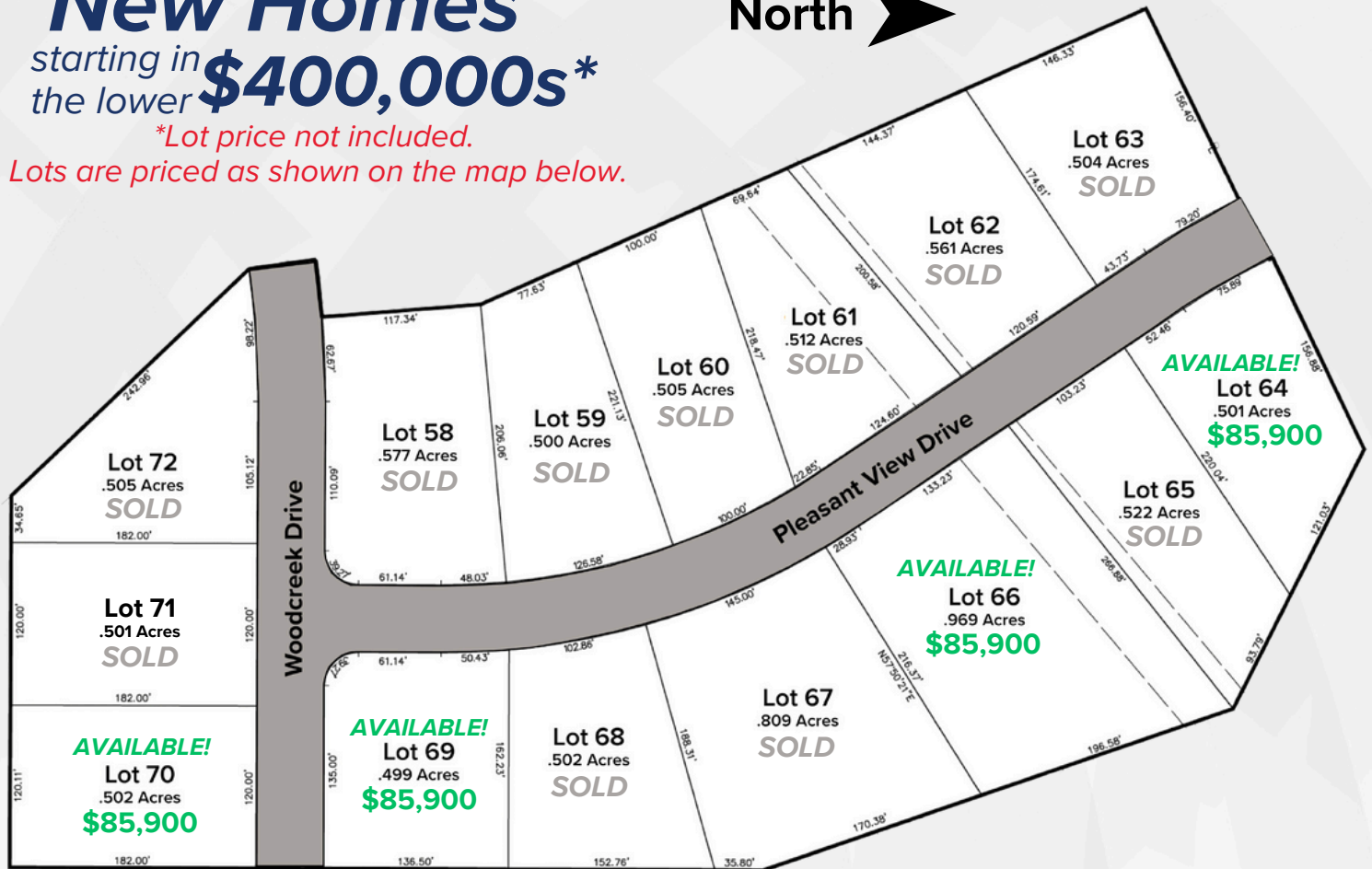
## New Homes

starting in the lower **\$400,000s\***

*\*Lot price not included.*

*Lots are priced as shown on the map below.*

North 



\*See reverse for overall neighborhood map\*

### Directions:

From South County Road 25A, turn and travel west on Swailes Road. Make a left on Peters Road, and then a left on Hickory Lane. Finally, turn right on Pleasant View Drive and continue straight into Stony Brook Estates.

### Community features:

- Oversized Homesites (Half Acre+)
- Close to I-75 and Shopping
- Home Size Minimum Requirements:
  - 1800 SF - Single Story
  - 2000 SF - Multi-Story
- Public Sidewalks
- Troy City School District

**Harlow**  
BUILDERS INC

701 N. Market Street | Troy, Ohio 45373  
937-339-9944 | sales@harlowbuilders.com  
www.harlowbuilders.com

# Stony Brook Estates

Troy, Ohio

## Overall Neighborhood



701 N. Market Street | Troy, Ohio 45373  
937-339-9944 | [sales@harlowbuilders.com](mailto:sales@harlowbuilders.com)  
[www.harlowbuilders.com](http://www.harlowbuilders.com)



### Directions:

From South County Road 25A, turn and travel west on Swailes Road. Make a left on Peters Road, and then a left on Hickory Lane. Finally, turn right on Pleasant View Drive and continue straight into Stony Brook Estates.

North

