

Stony Brook Estates

Section 4

Troy, Ohio

Updated: 01/02/2025

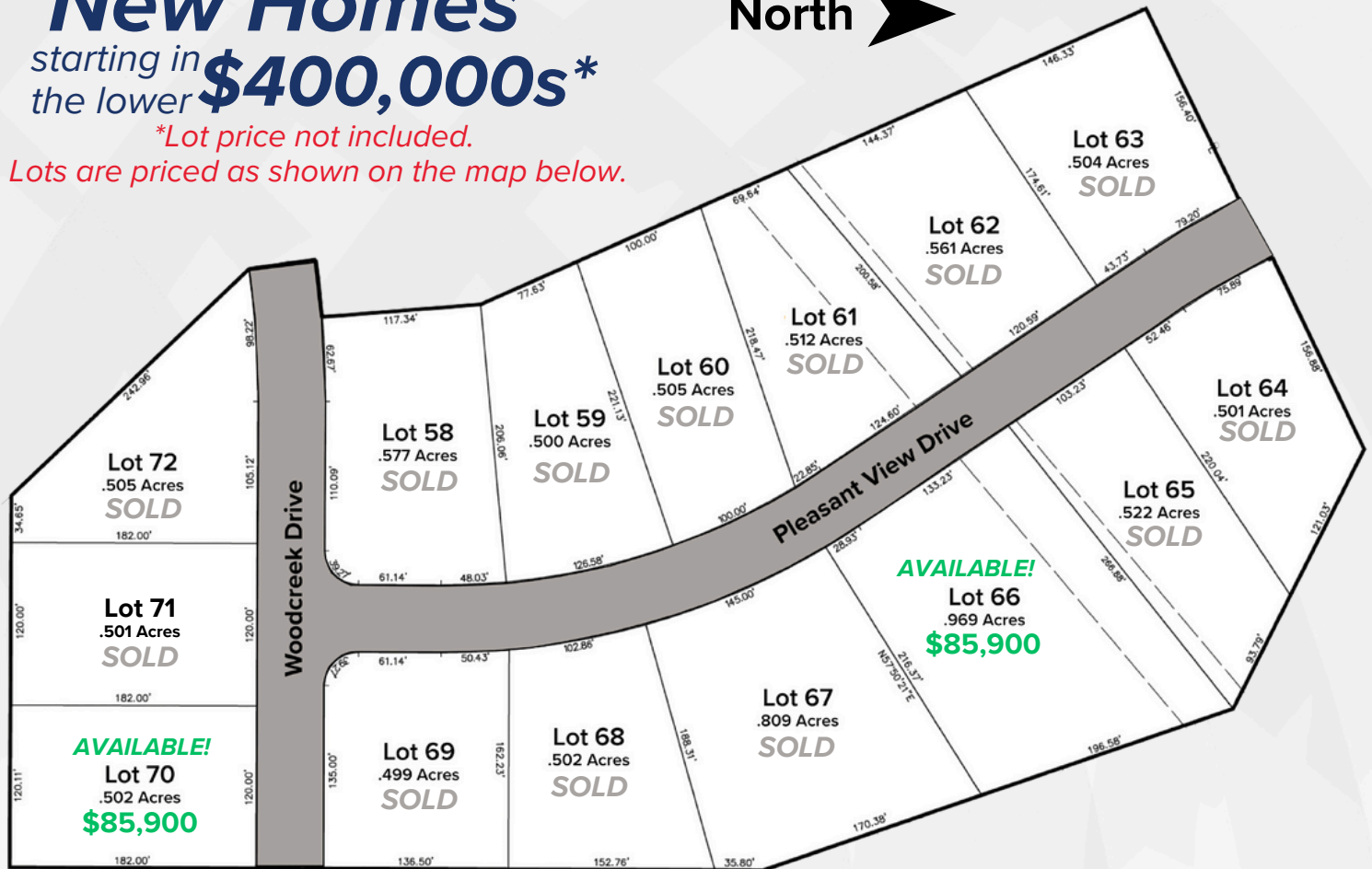
New Homes

starting in the lower **\$400,000s***

**Lot price not included.*

Lots are priced as shown on the map below.

North 



See reverse for overall neighborhood map

Directions:

From South County Road 25A, turn and travel west on Swailes Road. Make a left on Peters Road, and then a left on Hickory Lane. Finally, turn right on Pleasant View Drive and continue straight into Stony Brook Estates.

Community features:

- Oversized Homesites (Half Acre+)
- Close to I-75 and Shopping
- Home Size Minimum Requirements:
 - 1800 SF - Single Story
 - 2000 SF - Multi-Story
- Public Sidewalks
- Troy City School District

Harlow
BUILDERS INC

701 N. Market Street | Troy, Ohio 45373
937-339-9944 | sales@harlowbuilders.com
www.harlowbuilders.com

Stony Brook Estates

Troy, Ohio

Overall Neighborhood



701 N. Market Street | Troy, Ohio 45373
937-339-9944 | sales@harlowbuilders.com
www.harlowbuilders.com



Directions:

From South County Road 25A, turn and travel west on Swailes Road. Make a left on Peters Road, and then a left on Hickory Lane. Finally, turn right on Pleasant View Drive and continue straight into Stony Brook Estates.

North

